

# Weightanka® Assembly Instructions

**PLEASE BE ADVISED:** Before assembling the WEIGHTANKA system for the first time, it is highly recommended that Installers familiarise themselves with the component parts and carry out a test assembly and disassembly in a safe area away from the point of final installation. All component parts detailed in the operating instructions must be used in the assembly of the system. Should a piece be missing or appear defective do not continue to assemble and contact Kee Safety Immediately.

## Step 1



Lay the rubber coated base weights with suction cups facing downwards onto roof surface approx 1m apart. Ensure that the closest distance to any edge is not less than 2.5m

## Step 5



Slide the Bottom cross arm over diagonally opposite base weight pins ensuring that the threaded portion of the protruding set screw is facing upwards.

## Step 9



Place the polyethelene washer on top of the pedestal..

## Step 2



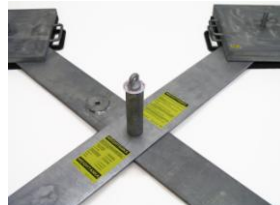
Screw the locating pins into the central tapped holes in the rubber coated base plates by hand until it is fully home.

## Step 6



Slide the Top cross arm over diagonally opposite base weight pins.

## Step 10



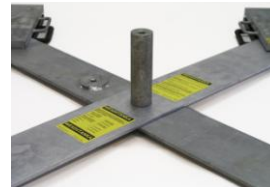
Place the PPE warning disc on top of the previously located washer and screw the eyebolt into the top of the Pedestal..

## Step 3



Slide the stabiliser arm over the locating pins by adjusting the position of the adjacent Base Plates .

## Step 7



Screw the pedestal onto the threaded portion in the centre of the two arms until it is fully home..

## Step 11



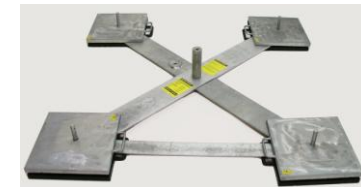
Using the supplied Tommy bar Hand tighten the eyebolt firmly in place until it is fully located..

## Step 4



Select the base cross arm and screw the M20 x 75 CSK Socket set screw into the centrally located CSK Boss.

## Step 8



Place the Galvanised weights over the locating pins. Stack the number of weights according to the application, ensuring that the number of weights on diagonally opposing sides are